

Performance Facts™

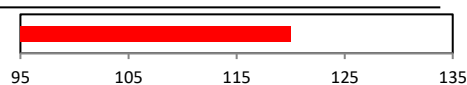
Loudspeaker Specifications

Grimani System Rixos-XL



Sound Level Capability - Long Term -

1m	120 dB
At seat of 3000/6000/9000ft ³ Room	113dB / 110dB / 107dB



Sound Level Capability - Short Term - Bursts

1m Anechoic	126 dB
In 3000/6000/9000ft ³ Room	119dB / 116dB / 113dB
Recommended max room volumes (Fronts)	12000 ft ³

Product Overview

The Rixos-XL loudspeaker is a 3.5-way system with waveguide-coupled tweeter. It has dual 6.5" Woofers and 1" High-efficiency tweeter. It is designed for surface and in-wall installations, and features top quality european componentry.



Performance Specifications

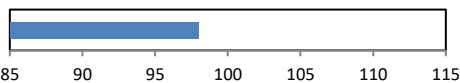
Frequency Range (-3dB)	80Hz - 18kHz	See Page 2
Frequency Range (-6dB)	70Hz - 18kHz	
Frequency Range at High SPL (-3dB) - 95dB	80Hz - 18kHz	
Frequency Range at High SPL (-3dB) - 105dB	80Hz - 18kHz	

Frequency Response - (Spinorama)

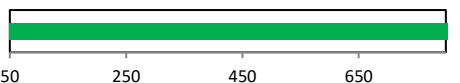
		See Page 2
Axial	+/- 2dB	
Listening Window	+/- 2dB	
Reflection Window	+/- 3dB	
Sound Power	+/- 3dB	

Directivity Index 125/250/500/1k/2k/4k/8k/16kHz	0 / 3 / 5 / 6 / 6 / 6 / 8 / 7dB	See Page 2
Directivity Index in Crossover Regions	7 dB	See Page 2
Coverage 500~10kHz -3dB	120H / 90V	See Page 2
Coverage 500~10kHz -6dB	150H / 120V	See Page 2
Main Listening Axis (H and V)	20	-10

Sensitivity	2.8V/1m Anechoic	98 dB
Sensitivity	3000/6000/9000ft ³	91dB/88dB/85dB



Power Handling Long Term	1000 W
Power Handling Short Term	2500 W
Power Handling At Max SPL condition	800 W



Input Voltage Capability Long Term	83.7 V
Input Voltage Capability Short Term	132 V
Input Voltage Capability At Max SPL condition	75 V

Impedance Magnitude over operating range

Average	7 Ohm	See Page 3
Min	6 Ohm	
Max	30 Ohm	

Distortion

80dB-90dB-100dB- Max SPL	0.4%-0.5%-0.7%-1.1%	See Page 3
--------------------------	---------------------	------------

Crossover Frequencies

	NAHz / 1.2kHz
--	---------------

Crossover Lobe Aiming

	0H/-10V
--	---------

Crossover Null Aiming

	0H/+45V
--	---------

Dimensions

Height / Width / Depth	36 / 13 / 8 Inches
------------------------	--------------------

Weight

	62 Pounds
--	-----------

Wire Length Max

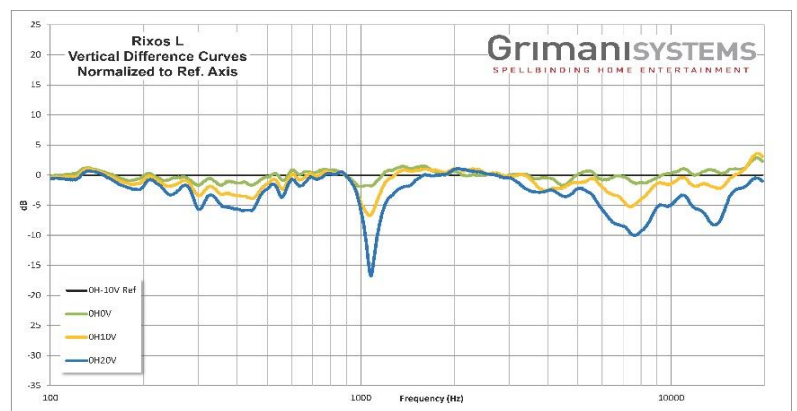
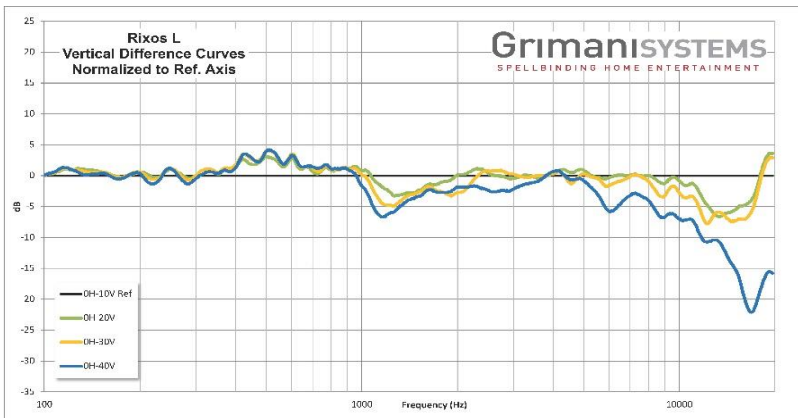
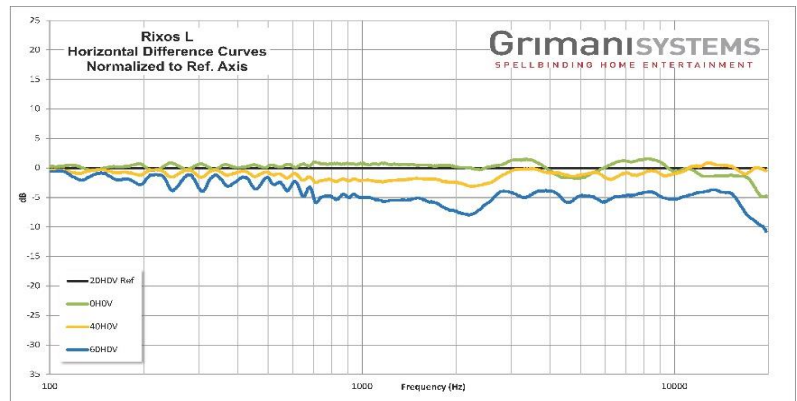
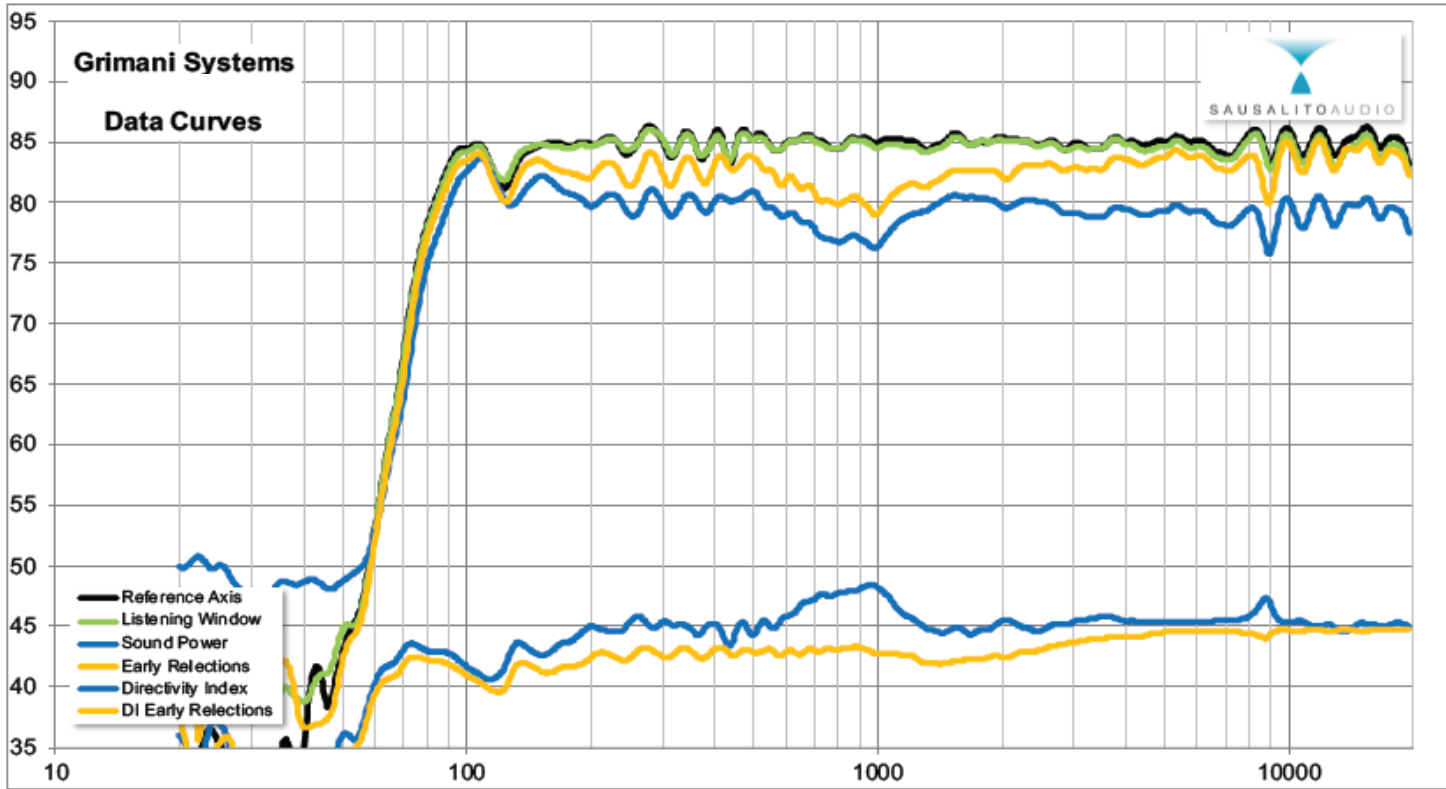
12-14-16-18 ga	100-50-25-12 ft
----------------	-----------------

Polarity (Woof-Mid-Tweet)

	+ / + / +
--	-----------

Connector Type

	Barrier Strip
--	---------------



All specifications herein are provided by the manufacturer for the purpose of accuracy in sound system and room design. The Manufacturer reserves the right to changes without prior notice. © 2021 Grimani Systems LLC.

Issue date: September 27, 2022